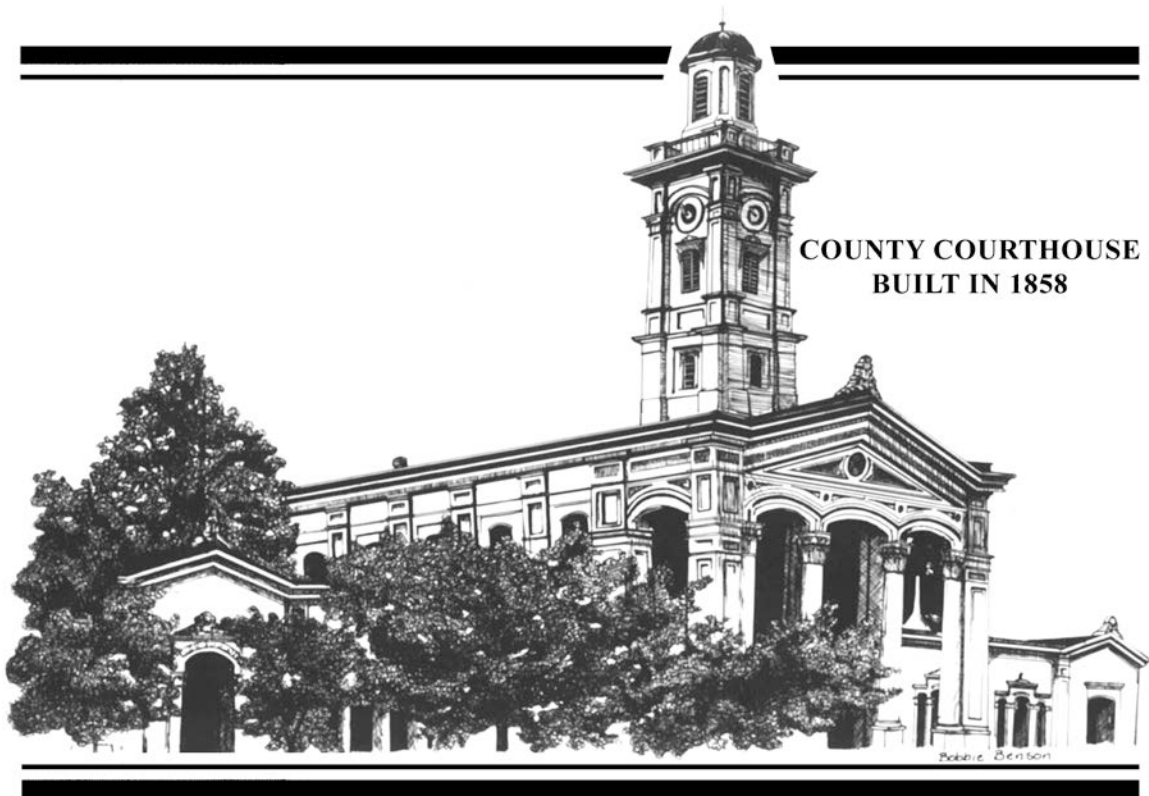


ROSS COUNTY COURT OF COMMON PLEAS
PROBATE-JUVENILE DIVISIONS
2 N. PAINT STREET, SUITE A
CHILLICOTHE, OHIO 45601
(740) 774-1177/774-1179

2016 ANNUAL REPORT



J. Jeffrey Benson, Judge

Ross County Commissioners and Citizens of Ross County:

Attached please find the Annual Report of the Ross County Probate/Juvenile Court. We continue to strive to be staffed and structured in a manner that will best serve the needs of every citizen of Ross County. This Court is very aware of the new, evolving and serious issues facing our families and children as well as the changes in Ohio law designed to best address those issues. We acknowledge that what worked in the past may not necessarily work in the future. We will continue to budget/ utilize our resources, prioritize our services, and promote coordination of efforts among the other Ross County Courts and our support agencies.

The information set forth in the Annual Report is intended to document the increased demands upon and services provided by the Ross County Probate/Juvenile Court. Thank you in advance for your continued cooperation and support.

J. Jeffrey Benson

J. Jeffrey Benson
Ross County Court of Common Pleas
Probate and Juvenile Divisions

PROBATE DIVISION

THE RECORDS OF THE PROBATE COURT OF ROSS COUNTY, OHIO PRE-
DATE THE ESTABLISHMENT OF THE STATE OF OHIO IN 1803

INTRODUCTION TO THE PROBATE DIVISION

The Probate Division of the Court of Common Pleas has jurisdiction concerning estates of deceased persons and of incompetent persons and minor persons, adoptions, trusts, mental illness proceedings, marriage licenses, civil actions, and various miscellaneous matters touching on inheritance and family law, other than divorce and dissolution.

There were 1,166 probate court cases filed in 2016. This is a 1.8% increase from 2015 when there were 1,145 probate court cases filed.

CASE FILINGS

■ Estates

The Probate Division of the Court of Common Pleas of Ross County, Ohio, reports that:

- Three hundred fifty-five (355) new estate cases were filed
- Twenty-two (22) cases were reopened.
- Two hundred thirteen (213) estate cases were pending at the end of 2015.
- In 2016, there were 329 terminations or closings, leaving 260 estates pending at the end of the year.

■ Guardianships

Fifty-seven (57) new guardianships were filed in 2016 which included one (1) case that was reopened.

- Fifty-five (55) were guardianships of an incompetent person. There were 296 incompetent guardianships pending at the end of 2015. Forty-one (41) incompetent guardianships were terminated leaving 310 incompetent guardianships pending at the end of 2016.
- Two (2) of the guardianship cases were guardianships of minors. There were 94 guardianships of a minor pending at the end of 2015. Fifteen

(15) guardianships were terminated leaving 81 guardianships pending at the end of 2016.

■ **Trusts**

Six (6) new trusts filed.

- At the end of 2015, there were 43 cases pending. During 2016, three (3) cases were terminated, leaving a caseload of forty-six (46) trust cases pending at the end of the year.

■ **Civil Actions**

Thirteen (13) new civil actions were filed.

- At the end of 2015, there were 21 civil actions pending. In 2016, twenty-one (21) cases were terminated leaving 13 civil actions pending at the end of the year.

■ **Adoptions**

Forty-six (46) new adoptions were filed.

- Nineteen (19) were adoptions by individuals or Agencies.
- Nineteen (19) were step-parent adoptions.
- Five (5) were adult adoptions.
- Two (2) were foreign adoptions.
- One (1) was a court ordered placement.
- Thirty-six (36) adoptions were completed.
- Eighteen (18) adoptions remain pending on the adoption docket.

■ **Mental Illness**

Seventy-seven (77) mental illness cases were filed and 77 cases were terminated in this Court.

- Eight (8) for the Veteran's Administration Medical Center
- Fifty-one (51) for Adena Regional Hospital
- Thirteen (13) for the Scioto Paint Valley Mental Health Center
- One (1) was an Involuntary Treatment for Alcohol and/or Drug Abuse.

■ **Minor Settlement**

Three (3) new applications for approval to settle injuries to minors were filed in the year 2016.

- Three (3) cases were pending at the end of 2015.
- Four (4) cases were terminated in 2016 leaving two (2) cases pending at the end of the year.

■ **Birth Registrations**

One (1) delayed birth registration was filed.

■ **Birth Corrections**

Six (6) applications for birth correction were filed.

■ **Change of Name**

Forty-two (42) change of name applications were filed.

- Twenty-three (23) applications were for the change of name of an adult
- Nineteen (19) applications were for the change of name of a minor
- Forty-four (44) changes of name cases were closed in 2016 leaving 8 cases pending at the end of the year.

■ **Marriage License**

Five hundred one (501) marriage licenses were issued.

■ **Other**

There were fifty-nine (59) additional probate filings.

- Sixteen (16) INRE filings
- Forty-three (43) were wills placed on deposit with the Court for safekeeping.

PROBATE FINANCES

\$109,929.16 in court costs was paid in the Probate Division.

\$353,135.46 was expended in the Probate Division.

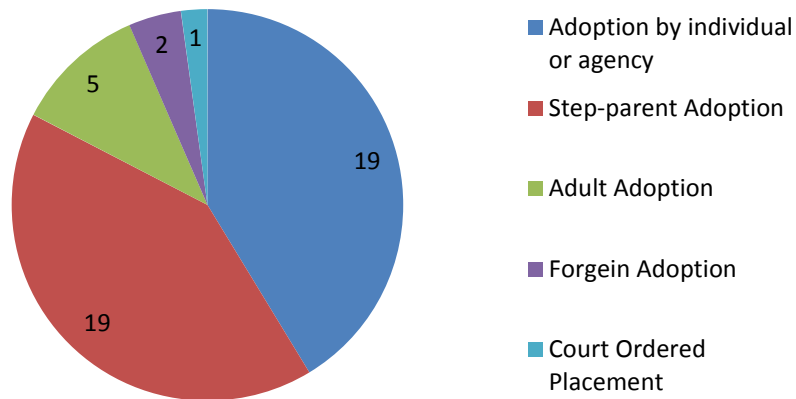
All pending litigation is current.

PROBATE CASE COMPARISONS

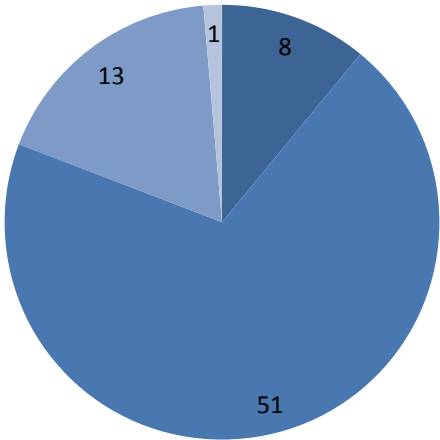
Probate Case Table

Year	2009	2010	2011	2012	2013	2014	2015	2016
Estates	374	380	409	444	416	330	352	355
Trusts & Guardianships	60	50	59	45	57	75	49	63
Civil Actions	11	13	15	10	22	21	27	13
Adoptions	45	25	39	41	23	33	16	46
Mental Illness	73	65	55	52	57	88	57	76
Others	582	584	622	554	591	597	644	613
Total	1145	1117	1199	1146	1166	1144	1145	1166

Adoptions

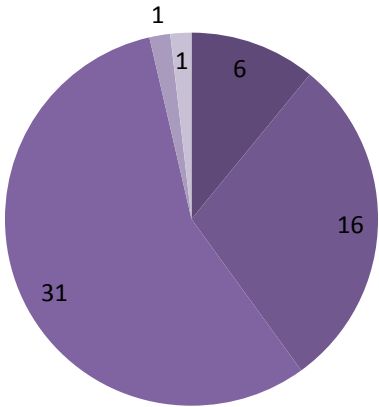


Mental Illness



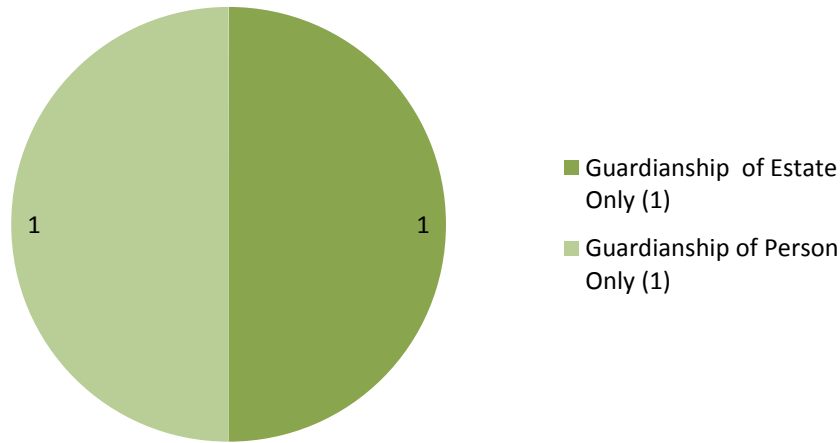
- Veteran's Administration (8)
- Adena Regional Hospital (51)
- Scioto Paint Valley Mental Health Center (13)
- Involuntary Treatment for Alcohol and/or Drug Abuse (1)

Guardianship of Incompetent



- Emergency Temporary Guardianship (6)
- Guardianship of Person & Estate (16)
- Guardianship of Person Only (31)
- Guardianship of Estate Only (1)
- Reopen (1)

Guardianship of Minor



JUVENILE DIVISION

INTRODUCTION TO THE JUVENILE DIVISION

The Juvenile Division of the Court of Common Pleas has jurisdiction concerning juveniles, including: delinquency, unruly, school truancy, juvenile traffic offender, alternative school assignments, dependency, neglect, abuse, and other juvenile matters. This division also has jurisdiction concerning adults: custody, paternity, child support, visitation, and contributing to the delinquent and/or unruliness of a minor. The Juvenile Division also has jurisdiction concerning adults in regards to school truancy matters: Failure to cause and compel the child under their charge to attend school in accordance with law, and aiding and abet to the unruliness of the minor by failing to cause the child under their charge to attend school in accordance with law.

There were 1,492 juvenile court cases filed in 2016. This is a 5.9% increase from 2015 when there were 1,404 cases filed.

CASE FILINGS

■ Delinquent

There were 372 delinquent cases filed. Of these cases, there were 425 charges filed.

- A delinquent child is a child who commits a violation that would be a crime if committed by an adult.

- BIND OVER – A bind over is a delinquent case in which the State files a motion to transfer jurisdiction of the case to the General Division of Ross County, Ohio to try the juvenile as an adult. In 2016, there was 1 motion for bind over/motion for discretionary transfer filed.
- Of the 425 charges, seventy-two (82) were felonies in which:
 - Twenty-two (22) were adjudicated
 - Seventeen (17) were dismissed
 - Five (5) were reduced to a misdemeanor
 - One (1) was reduced to a lower felony
 - Five (5) were transferred
 - Thirty-one (31) are pending
 - One (1) was boundover

■ Unruly

There were eighty-nine (89) unruly cases filed.

- Of the 89 charges:
 - Sixty-seven (67) were for Unruly
 - One (1) was for Habitual Truant
 - Five (5) were for Home Truancy
 - Sixteen (16) were for Curfew
- Unruly cases include school tardy, school truancy, curfew, home truancy and unruly behavior. An unruly child is defined as any child who fails to submit themselves to the reasonable control of their parents, teachers, school officials, guardians, or custodians.
- First time unruly and school truancy offenders are diverted to mediation and chronic school truants are filed as delinquent complaints.

■ Adult

There were one hundred seventy-nine (179) adult cases filed.

- Of these adult case filings:
 - Three (3) were for contributing to the delinquency of a minor.
 - One hundred sixty-two (162) were for cause and compel.
 - Cause and compel charges are related to a parent(s), guardians(s) or custodian(s) not causing the child under their charge to attend school in accordance with the law.
 - Fourteen (14) cases were for parent educational neglect or failure to attend parent education classes.
 - In late 2000, the Court and the surrounding school systems, county and city, adopted a new school truancy program, which change how juvenile and adult charges are filed in truancy complaints. The law passed by the State provides for stricter penalties for parents/custodians who fail to send their child/or child under their charge to attend school and also for the children themselves.

■ Traffic

Three hundred forty-one (341) traffic citations were filed against juveniles.

- Of those citations, there were three hundred eighty-five (385) charges filed.

■ Dependent, Neglect, Abuse

One hundred seventy-six (176) dependent, neglect and abuse cases filed. This is a 32.9% decrease in filings from 2015, in which there were 316 cases filed.

- Of those 176 cases, eight (8) were for abuse. An abused child is one who is a victim of physical or sexual abuse.
 - One (1) was for sexual abuse
 - One (1) was for physical abuse
 - Six (6) were for babies born with positive drug tests
 - Drugs included: cocaine, opiates, oxycodone, suboxone, morphine, amphetamines, marijuana, hydrocodone, valium, and 2 were waiting test results.
- One (1) was for neglect. A neglected child is a child who lacks proper parental care due to the faults or habits of their parents, guardians, or custodians.
- One hundred sixty-seven (167) were dependent filings. A dependent child is a child who lacks proper care, through no fault of his parents, guardians, or custodians.

In 2016, parents of dependent, neglect and abused children were reportedly using the following drugs: buprenorphine, benzodiazepines, cocaine/crack cocaine, opiates, oxycodone, Percocet, suboxone, morphine, amphetamines, methamphetamines, marijuana, gabapentin, heroin, subutex, fentanyl, valium, triple c, Neurontin, alcohol, tricyclics, Xanax, unnamed pain pills, amitriptyline, and drug raids with unknown substances.

■ Paternity Child Support, Visitation, Custody

Two hundred thirty-seven (237) cases were filed regarding paternity, child support, visitation and custody.

- There were seventeen (17) paternity proceedings.
 - Paternity cases establish the parent/child relationship for children born of unwed parents.
- One hundred nineteen (119) were child support cases.
- One hundred one (101) were custody/visitation cases.

▪ **Grandparent Power of Attorney/Child Caretaker Authorization Affidavit**

Description: House Bill 130 creates two ways for grandparents to obtain “care, physical custody, and control” over grandchildren *without changing legal custody*: 1) Power of Attorney (POA) completed by parent(s), a custodian, or a guardian of a child; and 2) Child Caretaker Authorization Affidavit (CAA), created by the grandparent when the child’s parent(s), guardian, or custodian cannot be located. The documents must be properly signed and notarized. They are valid for one year, unless terminated earlier as specified in the bill. They may be renewed after one year, subject to court review.

- Thirty-two (32) grandparent power of attorney/child caretaker authorization affidavits were filed.

▪ **Marriage Consent**

One (1) marriage consent was filed.

▪ **Juvenile Civil Protection Order**

Amended Substitute House Bill 10 authorized juvenile courts to issue and enforce civil protection orders against juveniles who commit certain offenses of violence, aggravated trespass, sexually oriented offenses, or domestic violence regardless of the familial relationship between the parties.

- There were four (4) filings for juvenile protections orders. All filings were for juvenile civil protection orders.
 - One (1) was dismissed
 - One (1) was granted
 - Two (2) are pending

▪ **Miscellaneous Cases**

- Five (5) INRE cases were filed.
- Fifty-five (55) assignments to Paint Creek Youth Center (Lighthouse) were filed.
- One (1) parental agreements were filed.
- No permanent surrender, courtesy supervision or interstate compact cases were filed.

JUVENILE FINANCES

\$65,643.44 in court costs, was paid in the Juvenile Division.

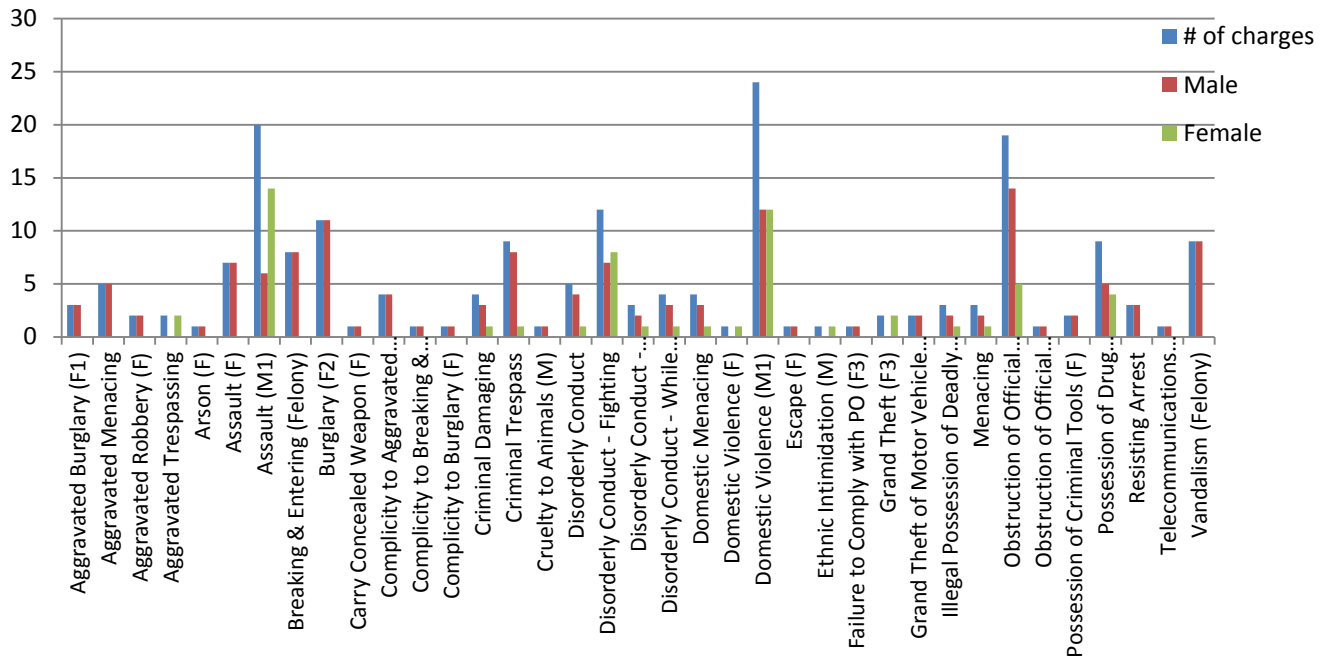
\$429,130.95 was expended in the Juvenile Division.

JUVENILE CASE COMPARISONS

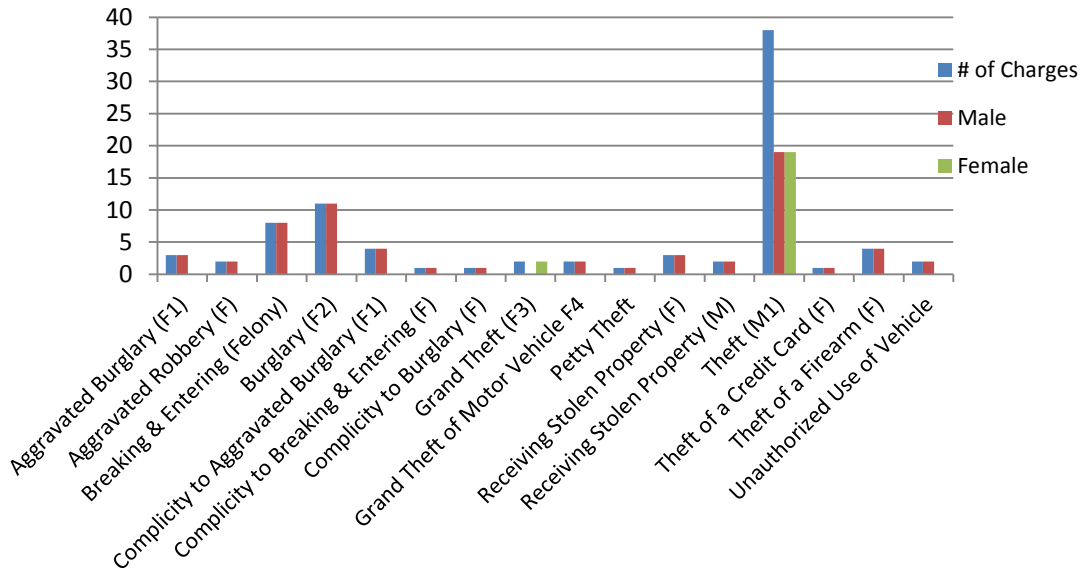
Year	2011	2012	2013	2014	2015	2016
Delinquent (cases not charges)	458	311	321	338	304	372
Unruly	79	43	46	66	70	89
Traffic (cases not charges)	355	306	267	264	338	341
Dependent/Neglect/Abuse	250	192	257	243	316	176
Adult	75	113	123	120	77	179
Paternity/Custody/Child Support	270	214	215	186	183	237
Grandparent Power of Attorney/CA	27	33	28	25	24	32
Juvenile Civil Protection Order	6	3	7	4	2	4
Miscellaneous Filings	72	81	83	77	90	62
Total	1592	1206	1347	1323	1404	1492

Juvenile Offenses of Violence

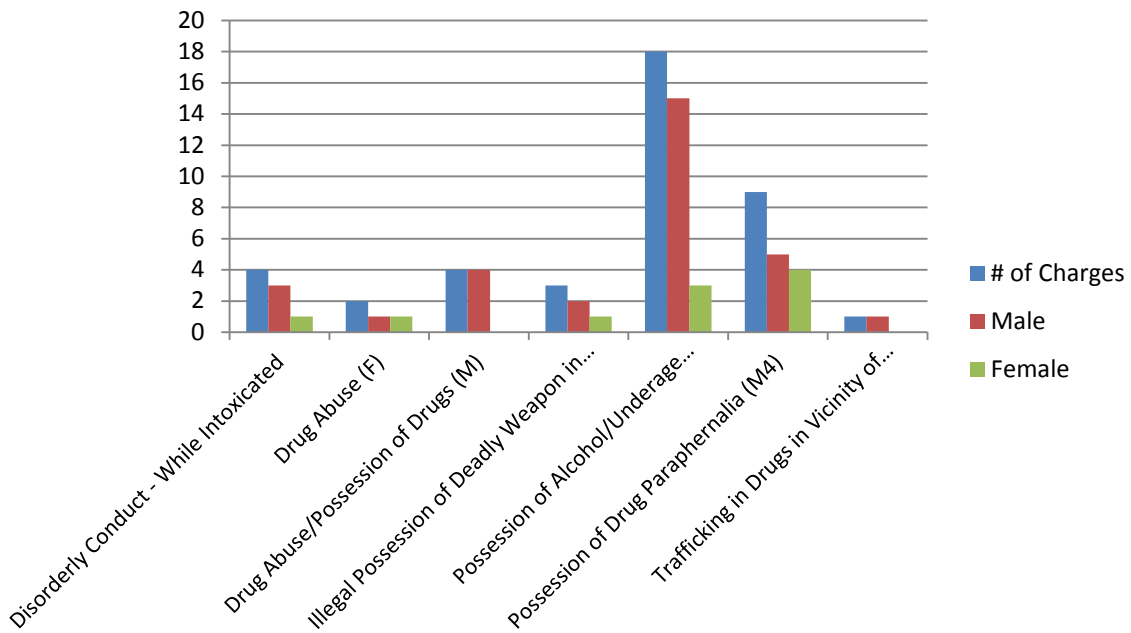
Excluding Sex Related Offenses
with Male-Female Ratios



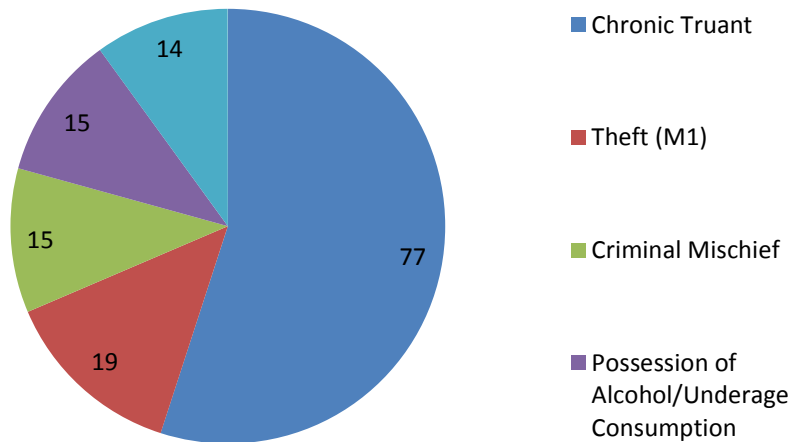
Juvenile Theft Related Charges With Male-Female Ratios



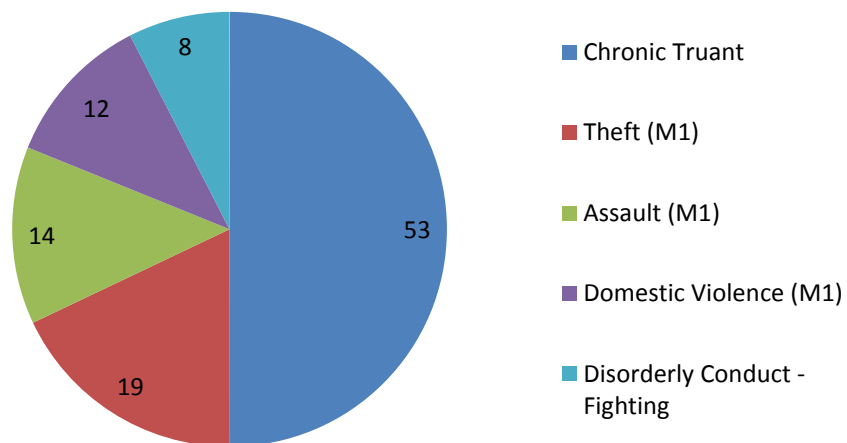
Juvenile Drug/Alcohol Related Charges with Male-Female Ratios



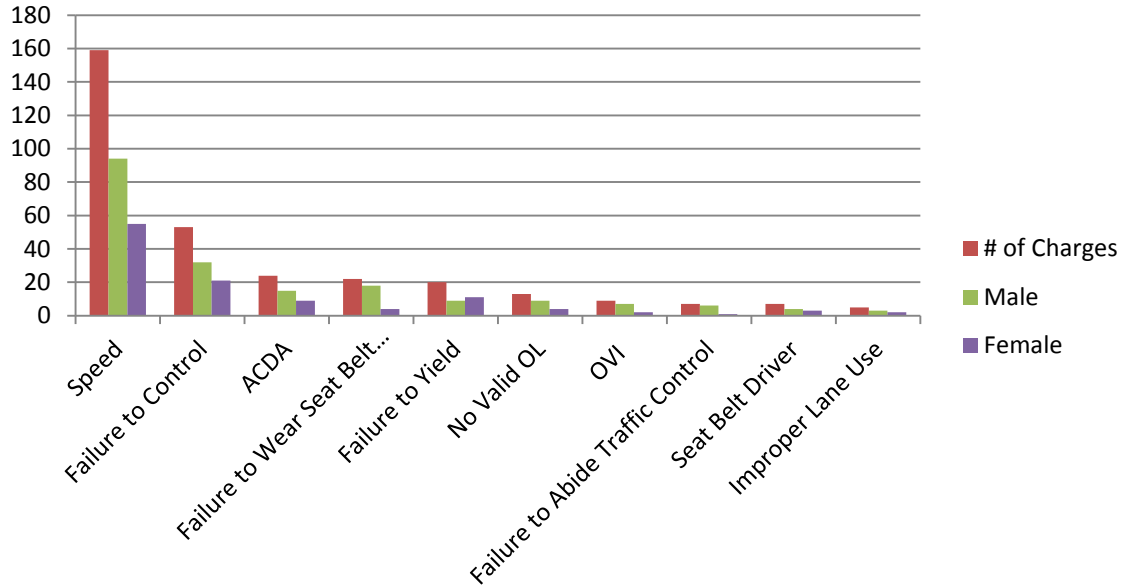
Top 5 Male Delinquent Charges



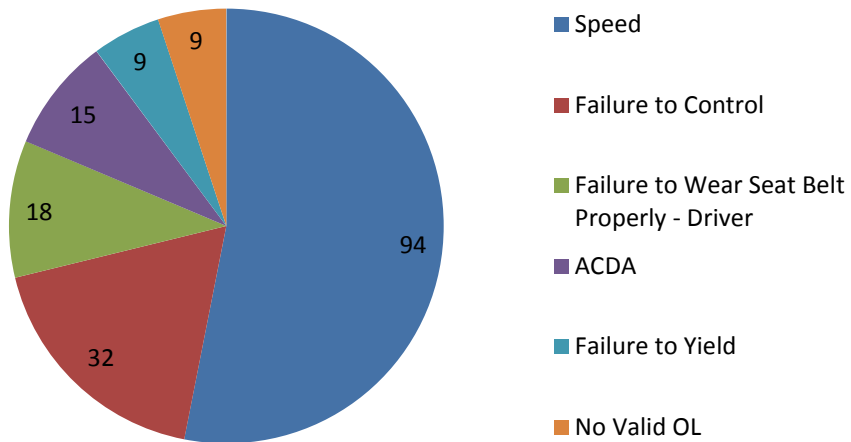
Top 5 Female Delinquent Charges



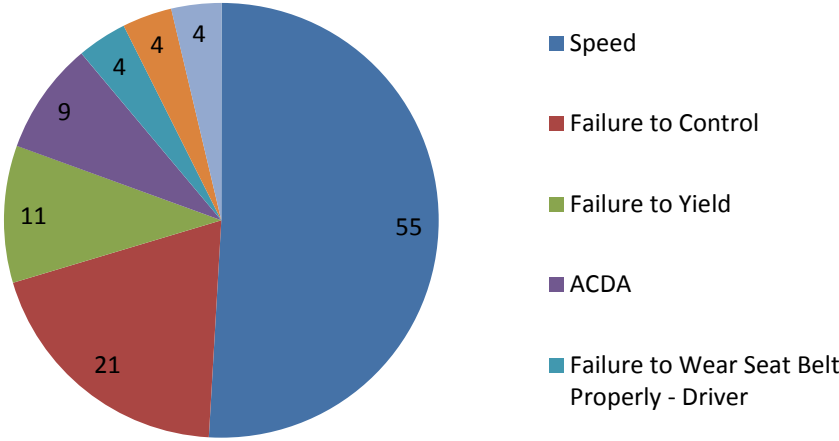
Top 10 Juvenile Traffic Charges with Male-Female Ratios



Top 5 Male Juvenile Traffic Charges

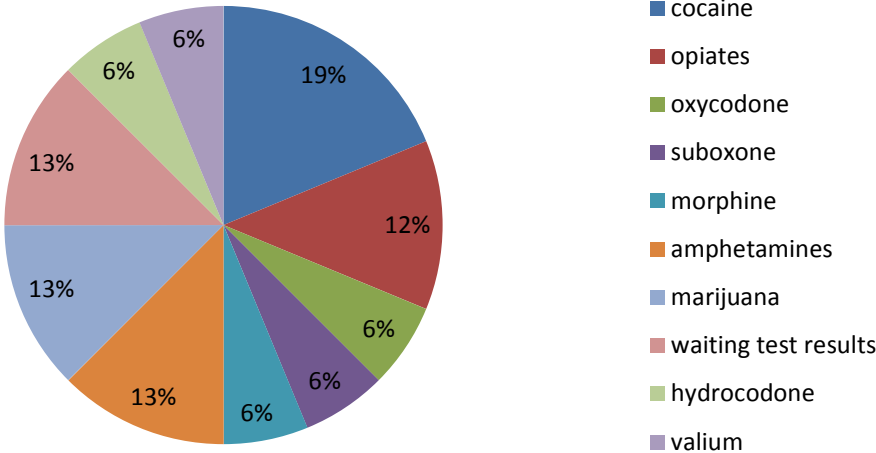


Top 5 Female Juvenile Traffic Charges

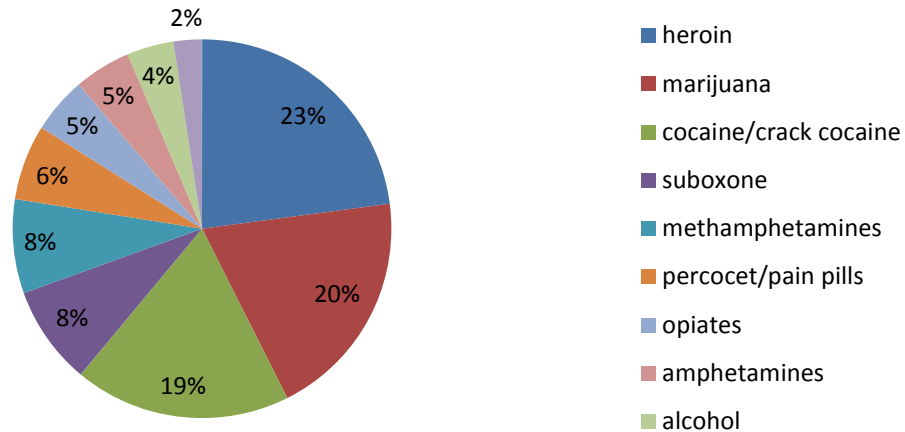


NOTE: The average miles per hour over the posted speed limit for juveniles cited in Ross County for the year 2016 was 18. An increase from 2015 when the average was 16.62 and from 2014 when the average was 17.68.

Type of drugs in the system of new born babies



Top 10 Reported Drugs used by parents in 2016 Abuse/Neglect/Dependency Cases



JUVENILE PROBATION DEPARTMENT

INTRODUCTION TO THE JUVENILE PROBATION DEPARTMENT

Prior to March 1, 2016 the Ross County Court of Common Pleas Juvenile Division's, Probation Department, was made up of two separate departments; the Juvenile Probation Department and the Title IV-E Division. At the start of 2016, Judge Benson determined that it is more productive and effective to merge the units in order to manage the Unruly and Delinquent youth of Ross County on a more consistent basis. Staff in both units remained the same but they are now all responsible for the functions of both divisions. (Since 2007 the statistics for the Juvenile Division Probation Department would have been broken up by each specific department.) The Ross County Court of Common Pleas Juvenile Division remains a Title IV-E Certified Court. The court is monitored under the guidelines set forth by Ohio Department of Job and Family Services. As a Title IV-E Entity Juvenile Court is eligible for and has received Federal Financial Participation reimbursement. This is a juvenile justice entitlement program that reimburses a percentage of the local costs for services to unruly and delinquent youth. The Commissioners receive a percentage of the funding and some of the reimbursement remains with the court to enhance juvenile justice services in our community.

The Juvenile Probation Department monitors juveniles placed on probation by the Judge or Magistrates in the Juvenile Court. The juvenile court assesses youth for community risk, level of care and brokers a range of services for youth and families. When necessary Juvenile Court will assume care and custody of unruly and delinquent youth and ensure education, comprehensive mental and

behavioral health intervention services, and treatment are provided to youth and families to promote family preservation. Oversight of RECLAIM Ohio and the development of programs and services remains under the administration of juvenile programs.

The Juvenile Probation Department also:

- prepares and files monthly reports for the individuals on probation;
- prepares and files reports and memos ordered by the Juvenile Court;
- finds residential placements and non-residential treatment programs for juveniles with alcohol and drug abuse problems;
- monitors the probationer's school attendance;
- assigns community service worksites and monitors the juvenile's performance;
- assigns juveniles placed in the RESCUE program worksites; and
- takes payments for restitution.
- Monitors service delivery in accordance with case plan activities
- Pre-dispositional investigations
- Recommend and supervise placements of unruly/delinquent youth
- Facilitates reunification efforts between youth and family
- Facilitates social service development for youth and family
- Supervises and case manage youth "at risk" for removal from the home
- Participates in identifying community service gaps and the development of collaborative relationships that proactively meets the needs of youth and family in the community.
- The Juvenile Probation Department further administers drug tests and monitors children placed on electronic monitoring; and various other duties as directed by the Juvenile Court.

JUVENILE PROBATION DEPARTMENT CASE LOAD

The Juvenile Probation Department began 2016 with 139 probationers and received 202 new probationers.

- 206 probations were terminated during the year.
- Leaving 135 probationers for 2017.
- Of the 202 juveniles placed on probation in 2015:
 - 159 were Caucasian.
 - 43 were non-Caucasian.
 - 80 were female.
 - 122 were male.

Court Placed 25 juveniles in 2016, with 22 of these youth entering court custody:

- 3 females and 22 males.
- 16 were Caucasian.
- 9 were non-Caucasian
- 11 were placed in foster care homes.
- Two youth (all males) were placed at a residential facility after being unsuccessful in foster care.

- 14 (all males) youth were placed in either a corrections facility or in a behavioral health and alcohol/drug IV-E certified program.
- Two youth (all males) were placed at a Community Corrections Facility (DYS program). Both youth failed to successfully complete the terms of community based programming and one was sentenced to ODYS and another placed in an alternative residential placement.

Reunification Outcomes:

Of the 25 youth in placement settings with juvenile court during 2016:

- 6 were reunified with a parent.
- 4 were placed with relative/kinship care.
- 2 non-relative care placement.
- 2 aged out of care.
- 11 remain in court placements as of December 31, 2016.

Restitution & RESCUE funds

In 2016, restitution paid to victims of crimes amounted to \$1,617.87.

RESCUE is a work program to assist juveniles in completing their restitution obligation.

- The child is assigned a work site in which the child receives a paycheck.
- However, the monies are paid to the Court and not to the child.
- The Court then deducts 65% of the child's pay and forwards this amount to the victim and of the remaining 35% the Court deducts poundage and then forwards to the child the balance of the monies.

In 2016, \$4,664.22 was paid to victims of crimes through the RESCUE program.

Total paid to victims in 2016 through restitution and RESCUE is \$6,282.09.

Electronic Monitoring

In 2016, the Juvenile Probation Department had a total of eleven (11) youth placed on electronic monitoring. The cost of electronic monitoring was \$11.00 per day.

The use of electronic monitoring is an effective tool for the probation department and is more cost effective than alternative costs such as the per diem rate of \$111.00 for the Ohio Department of Youth Services, the per diem rate of \$74.00 for the Hocking Valley Community Residential Center, and a varied per diem rate at the Juvenile Detention Center (a non-member rate is \$85.00 per day).

Department of Youth Services

In 2016, two (2) juveniles were committed to the custody of the Ohio Department of Youth Services. Commitment to the Department of Youth Services is only for felony offenders. Both were new commitments.

- All were male.
- All were Caucasian

Court Contracted Services

Lighthouse at Paint Creek started working out of the Juvenile Probation Department in 2015 to provide mental/behavioral health and alcohol and other drug services to court involved youth. Staff have been working with two different populations. A primary focus is providing outpatient sex offender treatment to youth who have been adjudicated or identified as having inappropriate sexual behavior and involved with the court. The other focus is providing treatment to youth exhibiting alcohol and other drug related problems. The program has been very successful and the court will continue the contract through 2017.

The Juvenile Court is also working on several pilot programs for the upcoming year to provide additional services to the at-risk youth of Ross County.

JUVENILE PROBATION DEPARTMENT FINANCES

\$253,267.26 was expended in the Juvenile Probation Department in 2016.

\$552,931.87 was expended in the IVE Department in 2016.

Introduction to Court Alternative Programs

Juvenile court has had a high degree of involvement and interest in community programs and collaborative ventures that support youth and families. The court has initiated diversion programs and fostered alternative strategies to divert youth from court sanctions and out of home placements. With dwindling budgets and increased pressures to serve unruly and delinquent youth the court has identified alternative resources to administer justice, rehabilitate juveniles, promote public safety and provide opportunities to strengthen families.

Mediation

INTRODUCTION TO MEDIATION

In 2016, the Mediator was assigned four hundred seventy-five (475) cases. Of those cases, there were:

- Eighty (80) delinquency cases
- Seventy-three (73) unruly cases
- Thirty (30) custody cases
- Three (3) adult cases
- Two hundred seventy-nine (279) school truancy cases

- One (1) abuse case
- Four (4) paternity cases, and
- Five (5) dependency cases

In 2016, \$8,110.35 was paid in the the mediation/diversion fund.

In 2016 the Mediator was also given the responsibility of handling guardianship of incompetent investigations. He performed thirty-nine (39) guardianship investigations.

The Staff

THE STAFF OF THE PROBATE-JUVENILE DIVISIONS

- ❖ Judge J. Jeffrey Benson became the Ross County Probate/Juvenile Court Judge on February 9, 2015. Prior to his election to the bench, Judge Benson was a self-employed trial lawyer in Ross County for over thirty-three years. He received his Law Degree from Capital University in 1982 after graduating from Otterbein University in 1979. Judge Benson previously served three years as an Assistant Ross County Prosecuting Attorney, seven years as a member of the Chillicothe City Council, and eight years as a member of the Chillicothe City School District Board of Education. He is married to Shawn T. (Stephens) Benson and the proud father of four (4) boys.
- ❖ Magistrate Christine B. Hannan joined the Probate and Juvenile Court of Ross County in 1995 and retired in 2011. She was re-appointed as Magistrate. At the time of her initial appointment as Referee/Magistrate, Mrs. Hannan was an assistant prosecuting attorney for Ross County and a practicing lawyer with the law firm of Ward, Kellenberger, Nusbaum and Wissler. She received her Law Degree from Capital University School of Law in 1980 after graduating from Ball State University in 1977.
- ❖ Magistrate Steven E. Drotleff joined the Probate and Juvenile Court of Ross County in November of 2002. At the time of his appointment as Referee/Magistrate, Mr. Drotleff, was an assistant prosecuting attorney for Ross County and a practicing lawyer with the firm of Nusbaum, Ater, and Wissler. He received his Law Degree from Ohio State University College of Law in 1994 after graduating from Ohio University in 1991.
- ❖ Court Administrator, Donald E. Darby, joined the Probate and Juvenile Court in 1994. Mr. Darby started at with the Probate and Juvenile Court as a Youth Counselor. He was certified as a mediator in dispute resolution and domestic relations through the Supreme Court of Ohio and was appointed to the position of Mediator in 1999. He received a Bachelor of Arts Degree Cum Laude in Criminology from St. Leo College in 1994. He is federally trained Drug and Alcohol Program Administration and also a state certified guardianship investigator.

- ❖ Administrator of Juvenile Programs, Cheri Smitley, joined the Probate and Juvenile Court in 2005. She holds a Bachelor of Science Degree in Community Health Education, Master Degree in Management and Public Administration and is a Licensed Independent Chemical Dependency Counselor. Mrs. Smitley started with the Court as a Title II grant project director.
- ❖ Data Systems Analyst, Lisa M. Bair, joined the Probate and Juvenile Court in 1990. Mrs. Bair started with the Probate and Juvenile Court as a court reporter and was formally appointed to the position of Data Systems Analyst in 2000.
- ❖ Administrative Clerk/Mediation Secretary, Wendy McWhorter, joined the Probate and Juvenile Court in 1991. Mrs. McWhorter started with the Probate and Juvenile Court as a Deputy Clerk and was appointed to the position of Administrative Clerk/Mediation Secretary in 1999.
- ❖ General Deputy Clerk/Grant Administrator, Shelley Harper, joined the Probate and Juvenile Court in 1988. Ms. Harper started with the Probate and Juvenile Court as a Deputy Clerk and is currently working in the Juvenile Probation Department.
- ❖ Deputy Clerk, Billie Lytle, joined the Probate and Juvenile Court in 1992. Mrs. Lytle started with the Probate and Juvenile Court as a deputy clerk and is currently working as a Court Reporter.
- ❖ Chief Juvenile Clerk, Lois Smith, joined the Probate and Juvenile Court in 1993. Mrs. Smith started with the Probate and Juvenile Court as a deputy clerk in the Court's Juvenile Division. In 2005, Mrs. Smith was promoted to Chief Juvenile Clerk.
- ❖ Deputy Clerk, Penny Fannon, joined the Probate and Juvenile Court in 1995. Mrs. Fannon started with the Probate and Juvenile Court as a deputy clerk and is currently working in the Court's Probate Division.
- ❖ Juvenile Diversion Officer, Joseph Glandon, joined the Probate and Juvenile Court in 1996. He has a Bachelors Degree in Elementary Education from Ohio University. Mr. Glandon started with the Probate and Juvenile Court as a Probation Officer. He is currently still serving in that position.
- ❖ Archivist, Janet Ackley, joined the Probate and Juvenile Court in 1997. Mrs. Ackley started with the Probate and Juvenile Court as the Court's Archives and currently retains that position.
- ❖ Security Bailiff, Gary Steen, joined the Probate and Juvenile Court in 1998. Mr. Steen started with the Court as the security bailiff and continues to maintain that position. Prior to coming to work for the Probate and Juvenile Court, Mr. Steen was a Police Officer for the City of Chillicothe and retired in 1998.
- ❖ Deputy Clerk, Sara Mick, joined the Probate and Juvenile Court in 1998. Mrs. Mick started with the Probate and Juvenile Court as a deputy clerk. Mid-year, Mrs. Mick was moved to the Probate Division.
- ❖ Deputy Clerk, Tonya Wright, joined the Probate and Juvenile Court in 1998. Mrs. Wright started with the Probate and Juvenile Court as a deputy clerk and is currently working in the Court's Juvenile Division.

- ❖ Community Liason Officer, Brandy McCord, joined the Probate and Juvenile Court in 2000. Mrs. McCord joined the Probate and Juvenile Court as a social worker. In 2011, upon the retirement of Linda Young, Mrs. McCord now is the Community Liason Officer. She holds a Bachelor of Arts in Criminology from Ohio University in 1998. She also received a Master of Arts in Sociology with a specialization in Crime and Deviance from Ohio University in 2003.
- ❖ Probation Officer, Matt Sutherland, joined the Probate and Juvenile Court in 2001. He has a Bachelors Degree in Criminal Justice and an Associates Degree in Law Enforcement Technology from Ohio University. Mr. Sutherland started with the Probate and Juvenile Court as a probation officer and currently retains that position. He is also a state certified guardianship investigator and was certified as a mediator in dispute resolution and domestic relations through the Supreme Court of Ohio.
- ❖ Deputy Clerk, Tammy Kellough, joined the Probate and Juvenile Court in 2001. Mrs. Kellough started with the Probate and Juvenile Court as a deputy clerk and continues to maintain her position working in the Court's Juvenile Division.
- ❖ Deputy Clerk, Gloria Hinty, joined the Probate and Juvenile Court in 2007. Mrs. Hinty works with the Probate and Juvenile Court as a deputy clerk in the Juvenile Probation Department.
- ❖ Chief Probation Officer, Shanna Haybron, joined the Probate and Juvenile Court in 2007. Ms. Haybron started with the Probate and Juvenile Court as a reunification probation officer in the Title IV-E Department. In 2016, she was promoted to Chief Probation Officer. She holds a Juvenile Sex Offender Counseling Certification from the University of Louisville.
- ❖ Deputy Clerk, Stephanie Wells, joined the Probate and Juvenile Court in 2007. Miss Wells works with the Probate and Juvenile Court as an intake clerk in the Court's front office.
- ❖ Reunification Probation Officer, Quincey Bailey, joined the Probate and Juvenile Court in 2010. He holds a Bachelor of Science Degree and a Juvenile Sex Offender Counseling Certification from the University of Louisville. Mr. Bailey works as a probation officer in the Juvenile Probation Department.
- ❖ Deputy Clerk, Jennifer Hancock, joined the Probate and Juvenile Court in 2012. Mrs. Hancock started with the Probate and Juvenile Court as a deputy clerk in the Juvenile Division.
- ❖ Reunification Probation Officer, Jessica Richmond, joined the Probate and Juvenile Court in 2013. Ms. Richmond works with the Probate and Juvenile Court in the Juvenile Probation Department.
- ❖ Deputy Clerk, Toni DeTillian, joined the Probate and Juvenile Court in 2014. Mrs. DeTillian started with the Probate and Juvenile Court as a deputy clerk and is currently working in the Juvenile Division.
- ❖ Deputy Clerk, Megan Cutright, joined the Probate and Juvenile Court in 2016. Ms. Cutright started with the Probate and Juvenile Court as a deputy clerk and is currently working as an intake clerk in the Court's front office.

- ❖ Bailiff, Benjamin Copher, joined the Probate and Juvenile Court in 2016. Mr. Copher started with the Probate and Juvenile Court as a bailiff and maintains that position.
- ❖ Deputy Clerk, Chrissy Miller, joined the Probate and Juvenile Court in 2016. Mrs. Miller started with the Probate and Juvenile Court as a deputy clerk and is currently working as an intake clerk in the Court's front office.

i

ⁱ Prepared by Lisa M. Bair, Data Systems Analyst, April 2017